

airox

WBCB TDS

W I D E

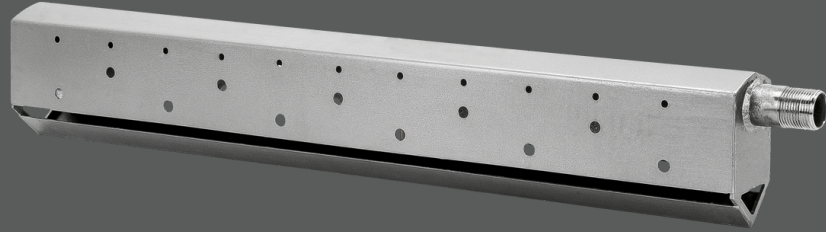
B A N D

C O A R S E

B U B B L E

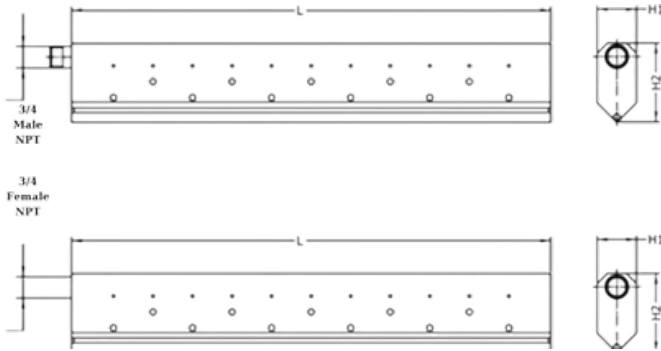
D I F F U S E R

W B C B - 6 0 0



www.airox.com.tr

airox



*If requested, different connection types can be provided.

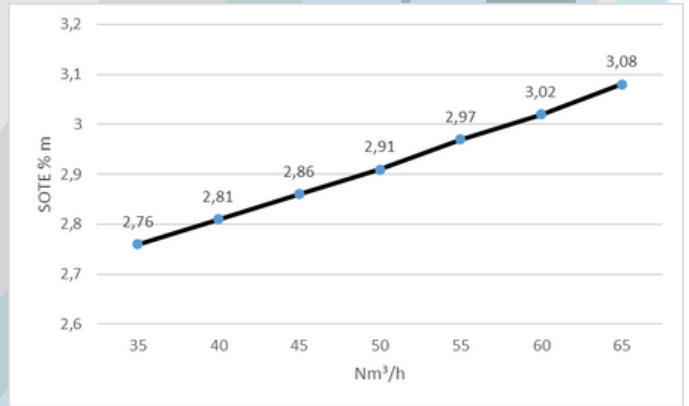
DIMENSIONS

H1	(mm)	50
H2	(mm)	100
Total Length	(mm)	600
Threaded Connection		3/4" M NPT 3/4" F NPT 1" M NPT 1" F NPT
Weight	(kg)	1,34
Materials		AISI 304/316

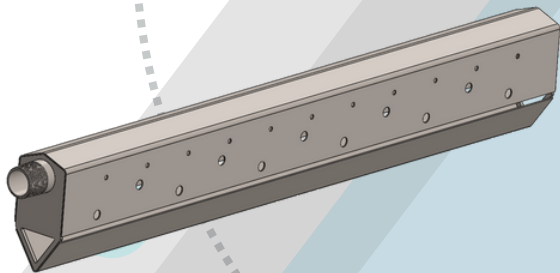
DIFFUSER

Number of upper holes		22
Diameter of upper holes	(mm)	4
Number of lower holes		22
Diameter of lower holes	(mm)	8

*The number of holes and pattern can be changed upon request.



*SOTE values depend on the test tank, diffuser density and water height.
*SOTE value for 4 meters water height is $(2.76 \times 4) = 11.04$ for 35 Nm³/h



PERFORMANCE

Minimum airflow	[Nm ³ /h]	7
Nominal airflow	[Nm ³ /h]	30
Maximum airflow	[Nm ³ /h]	80
Design airflow range	[Nm ³ /h]	20-40
Head losses	(mbar)	9,3

* Head losses are calculated at nominal airflow and 4m submergence.



airox

airox

GİF PLASTİK SAN. TİC. LTD. STİ.
KAYAPA MAH. ,NERGİZ(530) CAD. ,NO:7,
NİLÜFER/BURSA 16500
TEL : +90 224 443 77 84-85
MOBILE : +90 537 785 33 98
FAX : +90 224 243 34 24
email : info@airox.com.tr



airox

www.airox.com.tr